

WINTER PARK BUSINESS CENTER

803-811 South Orlando Avenue | Winter Park, FL 32789

OFFICE & FLEX SPACE AVAILABLE FOR LEASE



WINTER PARK BUSINESS CENTER

- Six (6) - single story office / flex / showroom - flex buildings
- Locally owned and managed
- Prime Winter Park location
- Ideal for showroom, office, or warehouse
- Immediate occupancy

LOCATION OVERVIEW

Winter Park Business Center, is conveniently located off South Orlando Avenue with immediate access to US Highway 17-92 and Fairbanks Avenue. Winter Park Business Center is minutes away from I-4 and less than 5 miles from Downtown Orlando.



TIFFANY ZULLO
407.659.0120 ext. 114
tzullo@towerrealtypartners.com

WINTER PARK BUSINESS CENTER
803-811 South Orlando Avenue | Winter Park, FL 32789

OFFICE & FLEX SPACE AVAILABLE FOR LEASE



AVAILABILITIES
RATE NEGOTIABLE

Suite No.	RSF	Suite Type
Suite 805 I-J Available 10/1/2019	3,060 RSF	Office
Suite 807 K-L	2,760 RSF	Office

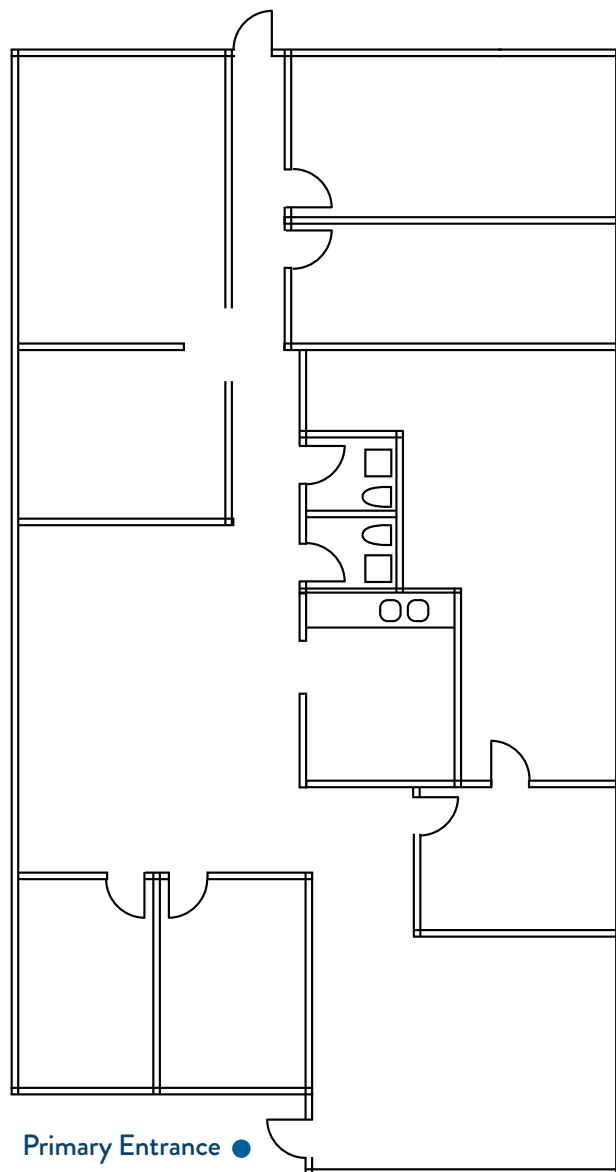


New Signage Throughout Property

TIFFANY ZULLO
407.659.0120 ext. 114
tzullo@towerrealtypartners.com

OFFICE & FLEX SPACE AVAILABLE FOR LEASE

SUITE 805 I-J | 3,060 RSF
AVAILABLE 10/1/2019

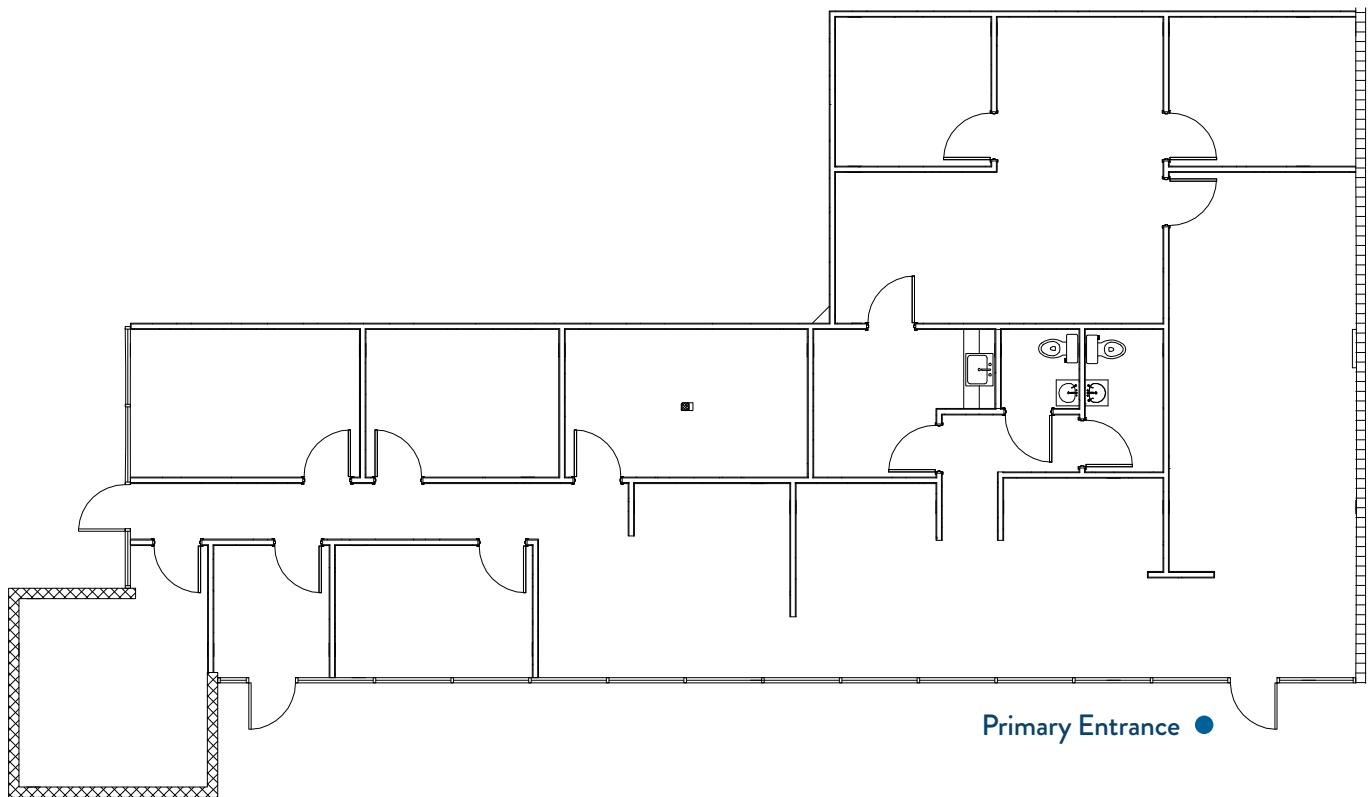


Primary Entrance ●

Note: Drawings not to scale

OFFICE & FLEX SPACE AVAILABLE FOR LEASE

SUITE 807 K-L | 2,760 RSF



Note: Drawings not to scale